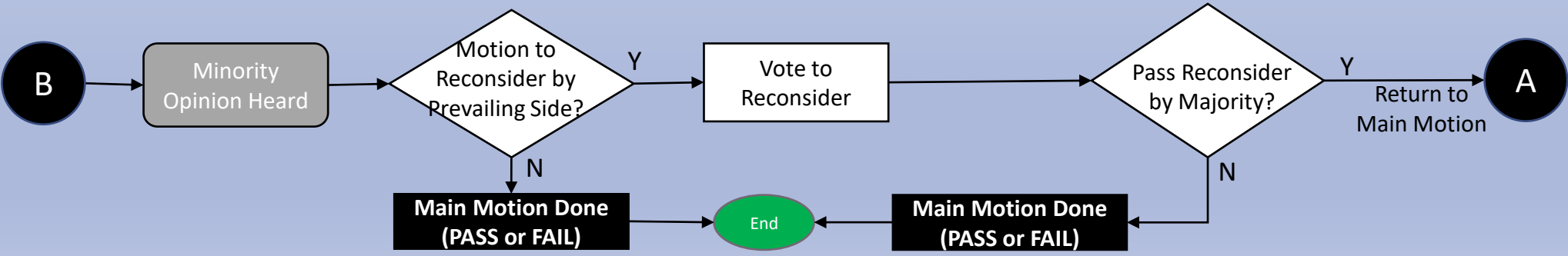
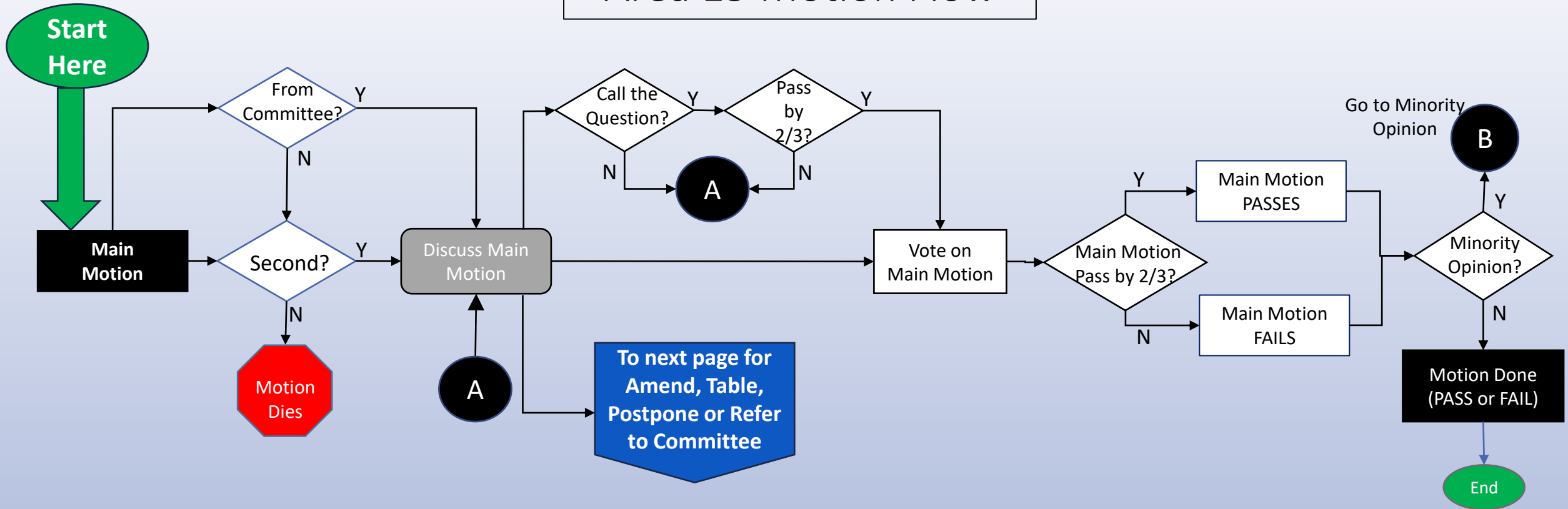
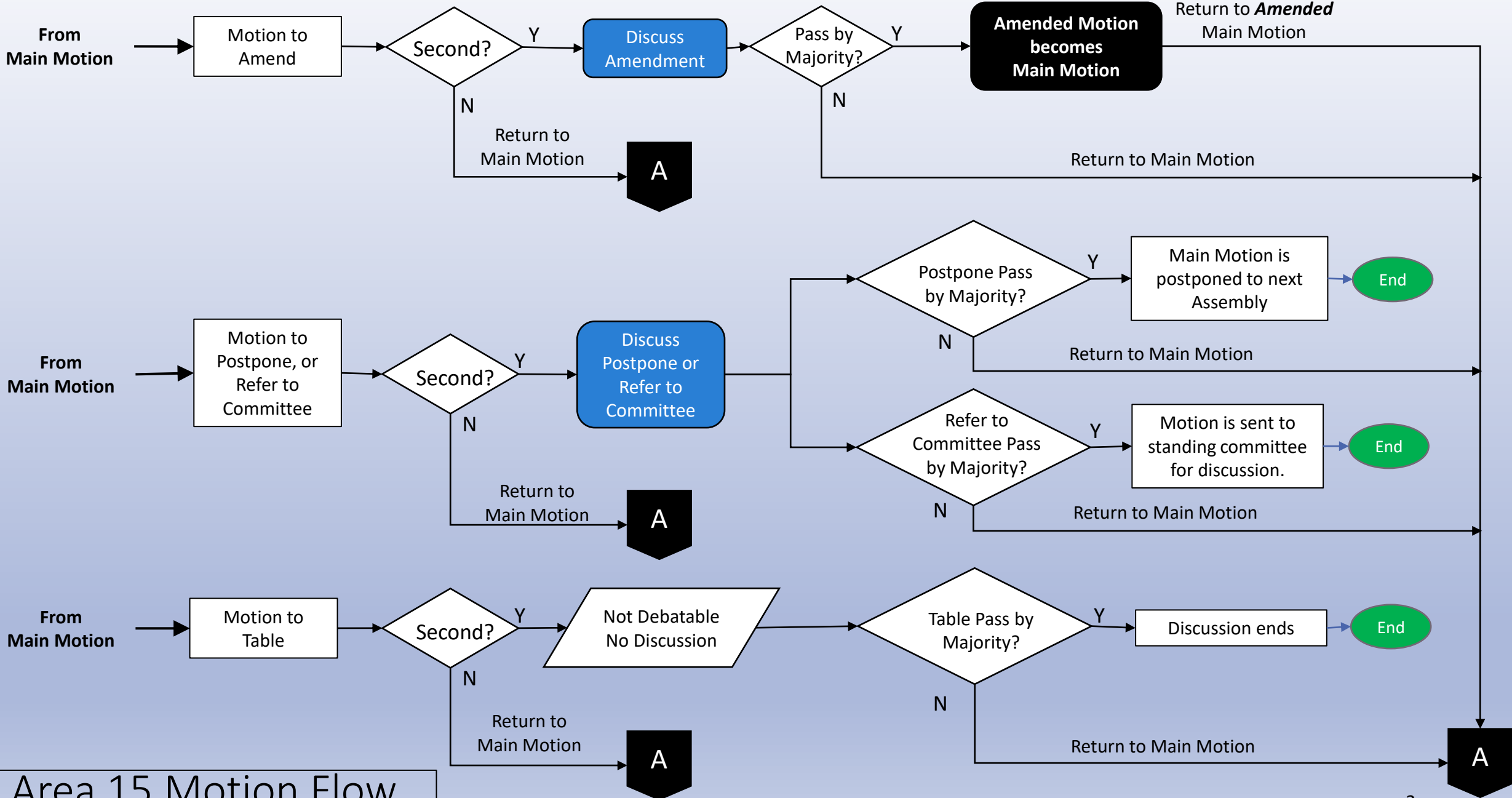


# Area 15 Motion Flow



Follow the arrows and note which way they point. Subsidiary motions are on the next page.










Area 15 Motion Flow

# Flowchart Legend

The shape of each symbol portrays the nature of each step shown on the flowchart.



Symbol	Symbol Name	Description
	Flow lines	Flow lines are used to connect symbols used in flowchart and indicate direction of flow.
	Terminal (START / STOP)	This is used to represent start and end of the flowchart.
	Input / Output	It represents information which the system reads as input or sends as output.
	Processing	Any process is represented by this symbol. For example, arithmetic operation, data movement.
	Decision	This symbol is used to check any condition or take decision for which there are two answers. Yes (True) or No (False).
	Connector	It is used to connect or join flow lines.
	Off-page Connector	This symbol indicates the continuation of flowchart on the next page.